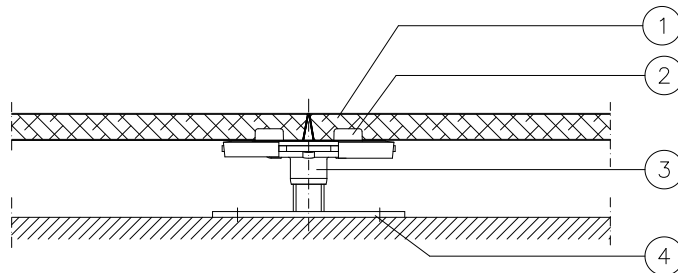


## Technical Data

## Low-Height-Access Floor



1. Floor panel without floor covering
2. Gasket
3. Pedestal
4. Pedestal base plate glued to the sub floor (dowelled on request)

### Technical Data:

### MERO Low-Height-Access Floor

#### Panel:

Dimension:	600 x 600 mm
Panel thickness:	~ 17 mm
Panel surface:	steel sheet
Panel underside:	steel sheet
System weight:	~ 40 kg/m <sup>2</sup> (without floor covering, floor height ~ 250 mm)
Panel weight:	~ 13,5 kg/piece
Panel material:	fibre-reinforced mineral material with steel application on top and bottom

#### Understructure:

Module:	600 x 600 mm
Pedestal material:	galvanized steel pedestals
Construction height: (without floor covering)	~ 40 mm

#### Load values:

Concentrated load:	class 1
• acc. to DIN EN 12825	2.000 N
• Nominal load	> 4.000 N
• Ultimate load	

#### Electrostatic:

> 10<sup>5</sup> Ohm  
(Depending on systems and floor covering)

#### Fire protection:

Building material class acc. to DIN 4102 T1:	A2
Fire resistance class acc. to DIN 4102 T2:	up to a construction height of 220 mm not necessary

#### Thermal conductivity: (base material)

~ 0,44 W/mK